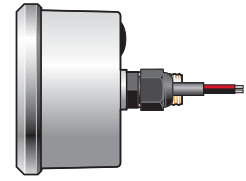


TECHNICAL SPECIFICATIONS

Sizes (dial diameters)	63 mm	2.50 in.	3.50 in.	100 mm	4.50 in.	6.00 in.
Panel Hole Sizes	2.50 in.	2.69 in.	3.78 in.	4.00 in.	4.85 in.	6.35 in.
Accuracy (full scale)	+/- 1.5%	+/- 1.5%	+/- 1.5%	+/- 1 %	+/- 1 %	+/- 1 %
Backlighting Option	YES	YES	YES	YES	YES	NO
Bezel Design	Crimped / Polished Stainless Steel	Chrome-plated Nylon	Chrome-plated Nylon	Crimped / Polished Stainless Steel	Chrome-plated Nylon	Crimped / Polished Stainless Steel
Case Design	Glass-filled Nylon 66 (6 inch gauge is stainless steel) Scratch-resistant molded polycarbonate lens with O-ring seal Chrome plated ABS decorative front bezel Two-sided adhesive gasket applied to the back of the flange of the gauge Includes a removable, see-through label to prevent scratching of the gauge face.					
Operating Pressure	Withstands pressures up to 100psi over gauge range Complies with all NFPA and ASME gauge tolerances and specs. after over-pressurization.					
Operating Temperature	-40 degrees to 185 degrees Fahrenheit					
Freeze-up Prevention	Gauges are protected from water freezing inside the bourdon tube by means of a KEM-X Socket Saver diaphragm seal device that prevents the media from entry and entrapment in the tube.					
Compiances	NFPA 1901, 2016 edition, section #16.12.2 ASME section B40.100 accuracy ASTM B117 salt spray corrosion resistance IP code IP69K moisture dust ingress					
Termination Fitting	1/4" NPT					
Mounting	Stainless steel rear mounting brackets					
Dial Markings	All gauge dial markings comply with UL 969 standards for marking and labeling systems as well as ASTM standard D4587 for Automobile Coatings for UV and exposure ratings.					
Pointer	Adheres to ASTM standard D4587 for Automobile Coatings for UV and exposure ratings.					
Warranty	5 Years					

BACKLIT GAUGES



Backlit Gauge
Base Part Number

3010XXX-00-XX-XX

Light Color

Gauge Range

Light Color

Light Color


TC Series Backlit Gauge w/Clamp


3010341 63 mm Nylon Case w/ Backlight
3102477 2.5 inch Nylon Case w/ Backlight
3102478 3.5 inch Nylon Case w/ Backlight
3010342 100 mm Nylon Case w/ Backlight
3102479 4.5 inch Nylon Case w/ Backlight


Range


01 0-400 psi
02 -30"-400 psi
03 0-600 psi
04 -30"-600 psi
05 -30"-400 psi Dual Scale kPa
06 0-400 psi Dual Scale kPa
07 -30"-600 psi Dual Scale kPa
08 0-600 psi Dual Scale kPa


Light Color

23 White 

01 Red 

11 Blue 

02 Orange 

08 Green 

DOC.7000006 REV.A



TC Series Fire Apparatus Pressure Gauges



TEMPERATURE COMPENSATING DESIGN IN ALL GAUGE SIZES

The Innovative Controls TC Pressure Gauges have been designed to solve all of the most common problems related to fire apparatus applications. These include high temperature gauge fill expansion, low temperature gauge freeze-up, and accuracy issues related to use in extreme environments.

These gauges feature an over-sized internal breathing diaphragm inside the case that compensates for liquid fill expansion caused by high temperatures - preventing plug failure and preserving gauge accuracy.

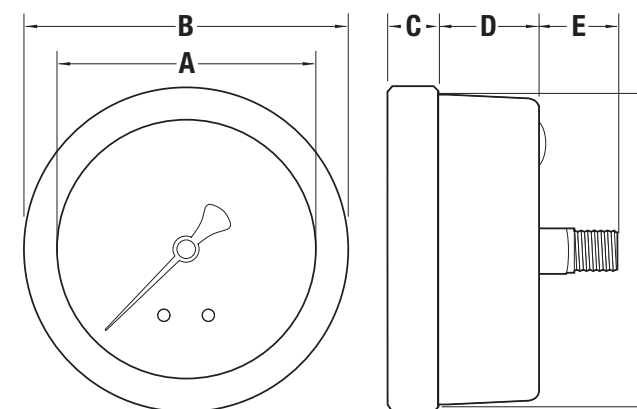
A KEM-X Socket Saver diaphragm, located in the stem, eliminates freeze-up by preventing water from entering and/or clogging the gauge internals while containing a low temperature instrument oil that fills and protects the socket and the bourdon tube.

A molded glass-filled Nylon 66 case will not corrode nor contribute to yellowing. Also, being a similar material, the case will expand and contract at a similar rate as the fill plug during temperature fluctuations - preventing leaks.

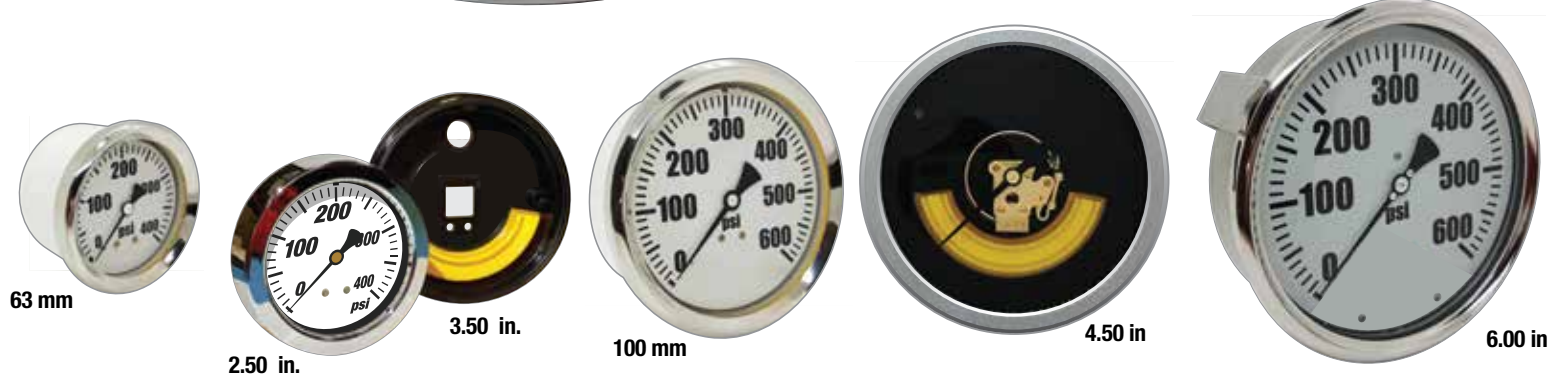
FEATURES

- Reliable liquid fill expansion compensation diaphragm
- Maintains accuracy in extreme environments
- Fully-filled: No visible bubble
- KEM-X Socket Saver gauge freeze-up protection
- Corrosion-free glass-filled Nylon 66 case
- Backlighting Option available in multiple colors
- Available in all common fire service industry sizes

DIMENSIONS



	A	B	C	D	E	F	Panel Cut-out
63mm	2.16"	2.70"	0.41"	1.27"	1.06"	2.48"	2.50"
2.5"	2.40"	3.23"	0.71"	0.62"	1.06"	2.63"	2.69"
3.5"	3.36"	4.23"	0.71"	0.62"	1.06"	3.73"	3.78"
100mm	3.50"	4.19"	0.38"	1.26"	1.06"	3.94"	4.00"
4.5"	4.47"	5.30"	0.71"	0.62"	1.06"	4.80"	4.85"
6.0"	6.00"	6.81"	0.71"	1.20"	1.40"	6.30"	6.35"



PART NUMBERS

Gauge Options Only Available on 63mm 100mm and 6 inch Gauges

Omit an E to the part number here if standard "legacy" gauge markings are desired. Not available in all gauge ranges.

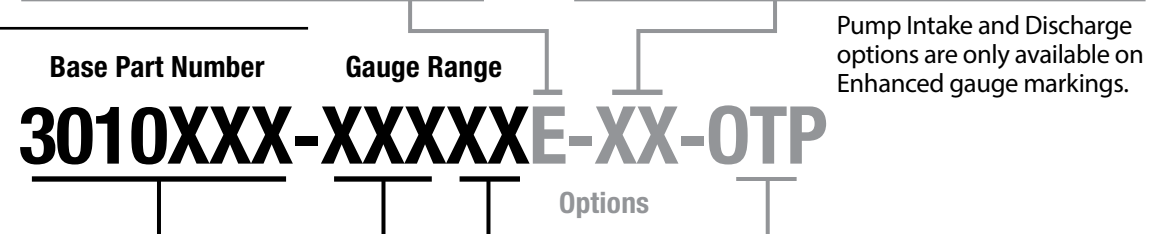
Add an E to the part number here to designate IC Enhanced gauge markings.

Add the letters PI to the part number here to designate the addition of **Pump Intake** to the master gauge markings.

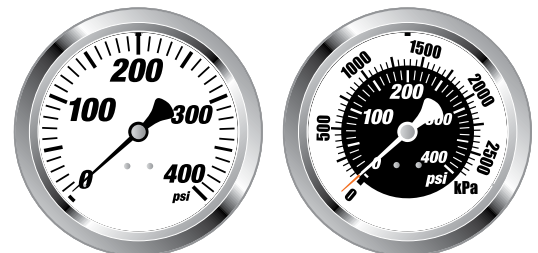
Add the letters PD to the part number here to designate the addition of **Pump Discharge** to the master gauge markings.

Enhanced

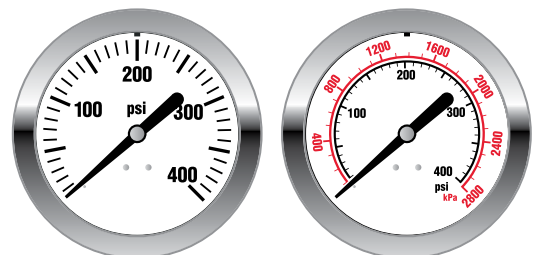
Master Gauge Marking Options



TC Series Gauge Type and Size w/Clamp	Size	Range	Orange Tip Pointer Option
3010339 63 mm Glass-Filled Nylon Case	200 63 mm	00 0-400 psi	
3010331 2.5 inch Glass-Filled Nylon Case	283 2.5 inch	01 -30"-400 psi	
3010332 3.5 inch Glass-Filled Nylon Case	383 3.5 inch	02 0-600 psi	
3010340 100 mm Glass-Filled Nylon Case	400 100 mm	03 -30"-600 psi	
3010332 4.5 inch Glass-Filled Nylon Case	483 4.5 inch	04 0-300 psi	
3010107 6 inch Stainless Steel Case	600 6 inch	05 0-400 psi Black	



63mm, 100mm and 6 inch gauges have the above style pointers and markings, and crimped stainless steel bezels,



2.5, 3.5 and 4.5 inch gauges have the above style pointers and markings, and Nylon screw-on bezels

Option for 2.5 inch Gauge Only

3010331-XXXX-XX

Color Bezel Option

- 01 Red
- 02 Orange
- 03 Yellow
- 06 Lime (Green)
- 08 Green (Dk Green)
- 10 Light Blue
- 11 Blue (Dk Blue)
- 14 Purple
- 15 Magenta (Rose)
- 17 Beige
- 19 Brown
- 20 Silver
- 22 Graphite (Gray)
- 23 White
- 24 Black
- 25 Gold